



JeffCo 2030 Report

Camp Sherman, Oregon

Camp Sherman Community Hall | November 5, 2019



In November of 2019, a group of Camp Sherman, OR residents gathered in the Camp Sherman Community Hall to participate in a visioning meeting regarding health and wellbeing factors in the community, led by members of the JeffCo Connects Community Network. Using a combination of brainstorming and prioritization processes called nominal group technique, each facilitated table worked to identify supports, challenges, and solutions to health and wellbeing issues in Camp Sherman. The following is an ordered compilation of priorities identified, as well as themes that surfaced in the small groups. These ideas will be triangulated and considered as local and county-wide priorities are identified by the network for focused efforts over the next 5 years.

Camp Sherman Priorities by Votes Tallied	
27	Improved Communications: Phone/Internet Service
20	Winter Road Safety Maintenance
19	Hire a Resident Sheriff's Deputy
17	Neighborhood Welfare Check Process
12	Train More Emergency Service Volunteers
10	Regular Exercise Classes
9	School Upgrades
8	Urgent Care in Sisters 24/7
6	Replace Radar Dish Sign
5	Emergency Services (RN/MD/EMS)
4	More Potlucks
4	24/7 EMS/Fire/Sheriff
2	Structure to Check-In with Community Members
2	Mobile Primary Care Clinic
1	Improved Cell Coverage
1	Community Center/Gathering Place

Responses to the question: What do you like about living in your community?
Sense of Community, "Hits Heart Home"
Long-Standing Neighbors and Friends
Clean, Healthy Air, Water, and Environment
Community Hall, Old Camp Vibe, Rustic Architecture, History, Store and Post Office, Red Roads
Quiet Solitude and Remoteness/Distance, but with Some Services
Access to Sisters/Black Butte Ranch
Climate, Weather, Seasons/Winter, Snow
Outdoor Recreation and Activities, Hiking, Biking, Skiing, Swimming in the Lake, Camping

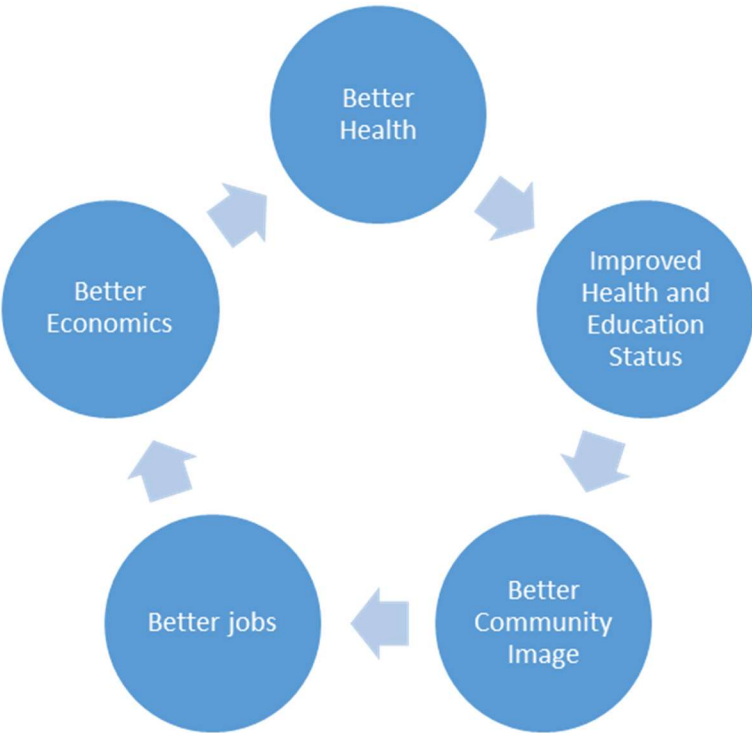
Trees and Forests
River
Nature
Wildlife, Including Fish
Night Sky (No Light Pollution)
Access to Public Lands, Trail Access
Few People, Rural Families, More Families
No Car Commute, Little to No Traffic
Sense of Volunteerism, Service Orientation, Sense of Engagement
County Services, Library Cards Work in Sisters, Healthy Interagency Collaboration
Quality Public Education, Black Butte School
Community Events Including Cabin Fever Potlucks and Fun Trick or Treating
Access to Quality Healthcare (Sisters/Redmond/Bend)
Healthiness
Dogs
Attracting More Families to the Area
Slow Pace, Low Crime
Intentional Living

Responses to the question: What things challenge health and wellbeing in this community?
Distance to grocery stores
Access to healthy food/produce, lack of fresh produce
Groceries expensive
Hard to grow own fresh food/short growing season
Internet and cell service: Poor, slow, spotty
Power outages/lack of winter shelter space
CEC poor response to needed repairs
Wildfires/needle burns/controlled burns
Weather/external forces: Frozen boogers☺
Winter driving/rough roads/snow removal side streets
Winter Walking
Wood Smoke
Cabin Fever/Lack of organized kids activities
Summer issues: Speed limits too high, crowding, influx of tourists
Isolation
Access to health care, distance to healthcare, urgent care/ER, distance to public health/behavioral health, immediate care
Lack of county services/support: law enforcement
Emergency services: Fire and EMS, delayed response times for emergency services
No library

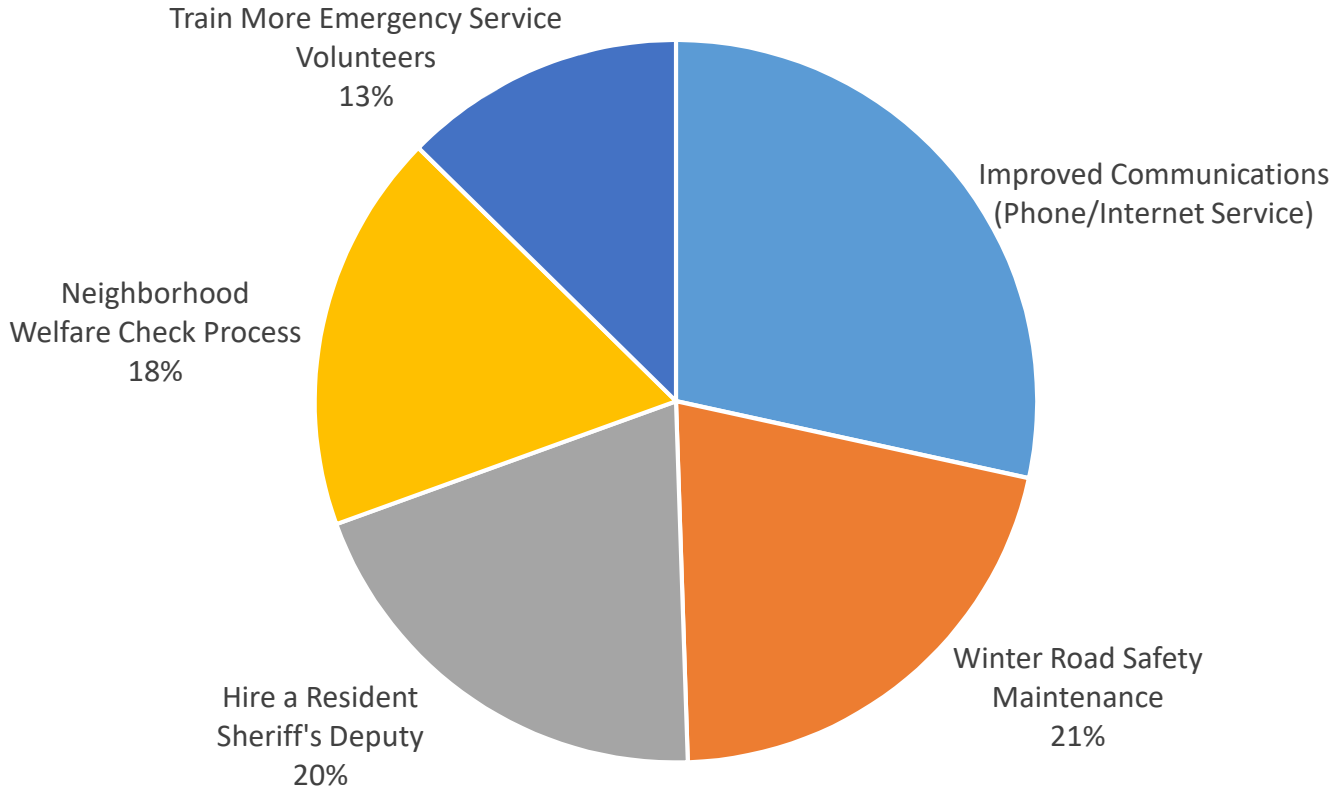
Camp Sherman store winter hours
Heating costs/stacking wood, cost of living and housing, no natural gas
Health insurance costs
Limited restaurants/bars/coffee/live music
Low diversity
Attitude
HOAs
Nothing

Camp Sherman Solutions Affinity Groups	
Affinity Groups	Responses
Improving Communication Systems	Phone and internet; Possible new internet provider (YellowKnife); Improving internet; Improving communication systems; Cell tower; Fiber optics
Developing a System to Check on Neighbors	Neighbor to neighbor welfare checks
County Maintenance of Winter Roads	Prompt snowplowing; Road services; Cinders
Emergency Services	RN/MD/EMS; Hire a resident deputy; Sheriff's house; 24/7 staffed EMS/Fire
N/A	Train More Emergency Service Volunteers
Food/Community Garden	Build a covered community garden; Develop a CSA drop site
Health Classes	Exercise classes; Health education
Community Activities	Monthly/weekly community activities; Movie night; More potlucks
Health Services	Mobile primary care; 24/7 urgent care access in Sisters; Visiting nurse services
N/A	Better CEC Infrastructure
N/A	Expand/Enhance Existing Library Collection
Safety Speed Zone	Replace radar speed sign; Lower the speed limit
Access to the Community Hall	Increase community center/gathering space options
Fire-Safe Home Practices	Grants for private lands/Fire Safe/Fuel reduction
Supporting Young Families	School upgrades; Shift focus from tourism to families; Playground/activity area
JeffCo Connects Regular Local Presence	Support local ongoing brainstorming and prioritization
ODFW	Anti-poaching patrols

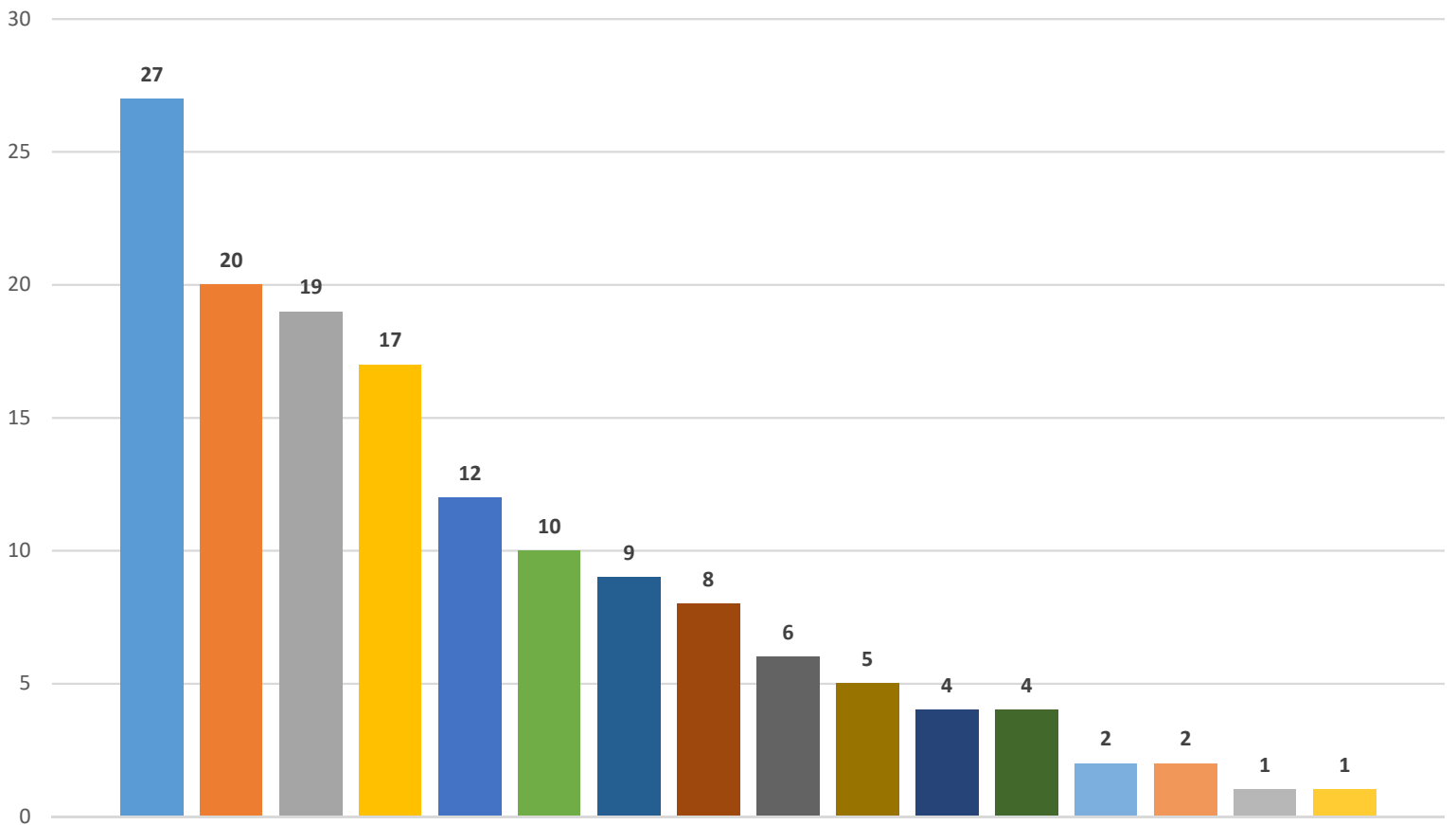
These themes and priorities will be utilized in community-wide and county-wide prioritization as the JeffCo Connects Community Network completes their visioning process in the Fall of 2019. These data will be triangulated with the Robert Wood Johnson Foundation’s County Health Rankings and other local and regional assessments to formulate a project plan and develop funding strategies to accomplish those targets. A huge “Thank you” to everyone who participated in the Camp Sherman meeting!



Camp Sherman Top Priorities

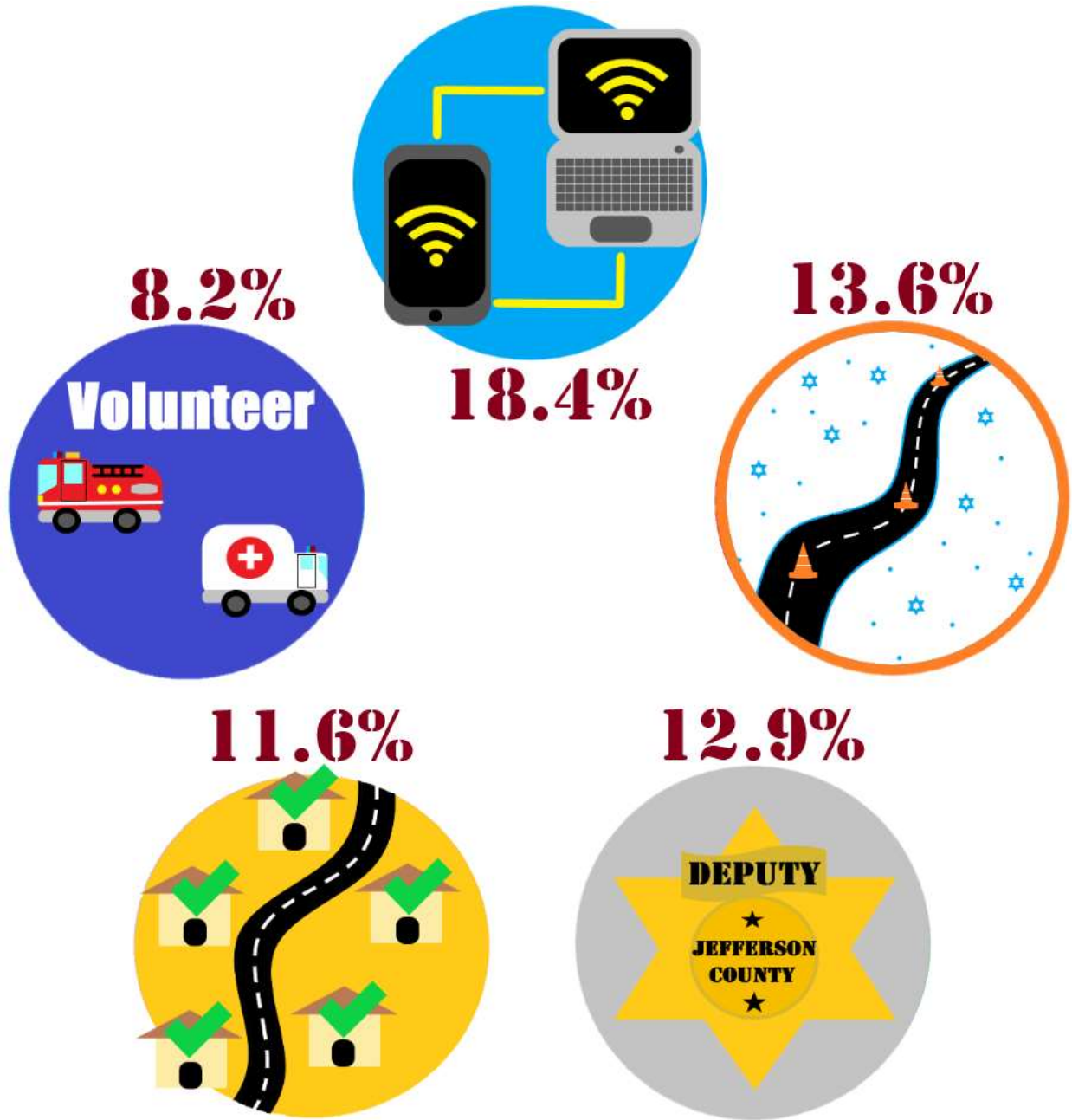


Camp Sherman Priorities



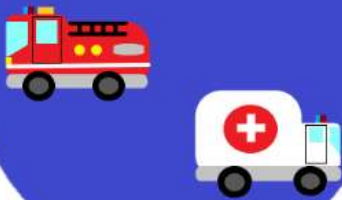
Camp Sherman Priorities Key

- Improved Communications (Phone/Internet Service)
- Winter Road Safety Maintenance
- Hire a Resident Sheriff's Deputy
- Neighborhood Welfare Check Process
- Train More Emergency Service Volunteers
- Regular Exercise Classes
- School Upgrades
- Urgent Care in Sisters 24/7
- Replace Radar Dish Sign
- Emergency Services (RN/MD/EMS)
- More Potlucks
- 24/7 EMS/Fire/Sheriff
- Structure to Check-In with Community Members
- Mobile Primary Care Clinic
- Improved Cell Coverage
- Community Center/Gathering Place



8.2%

Volunteer



18.4%

13.6%



11.6%



12.9%

